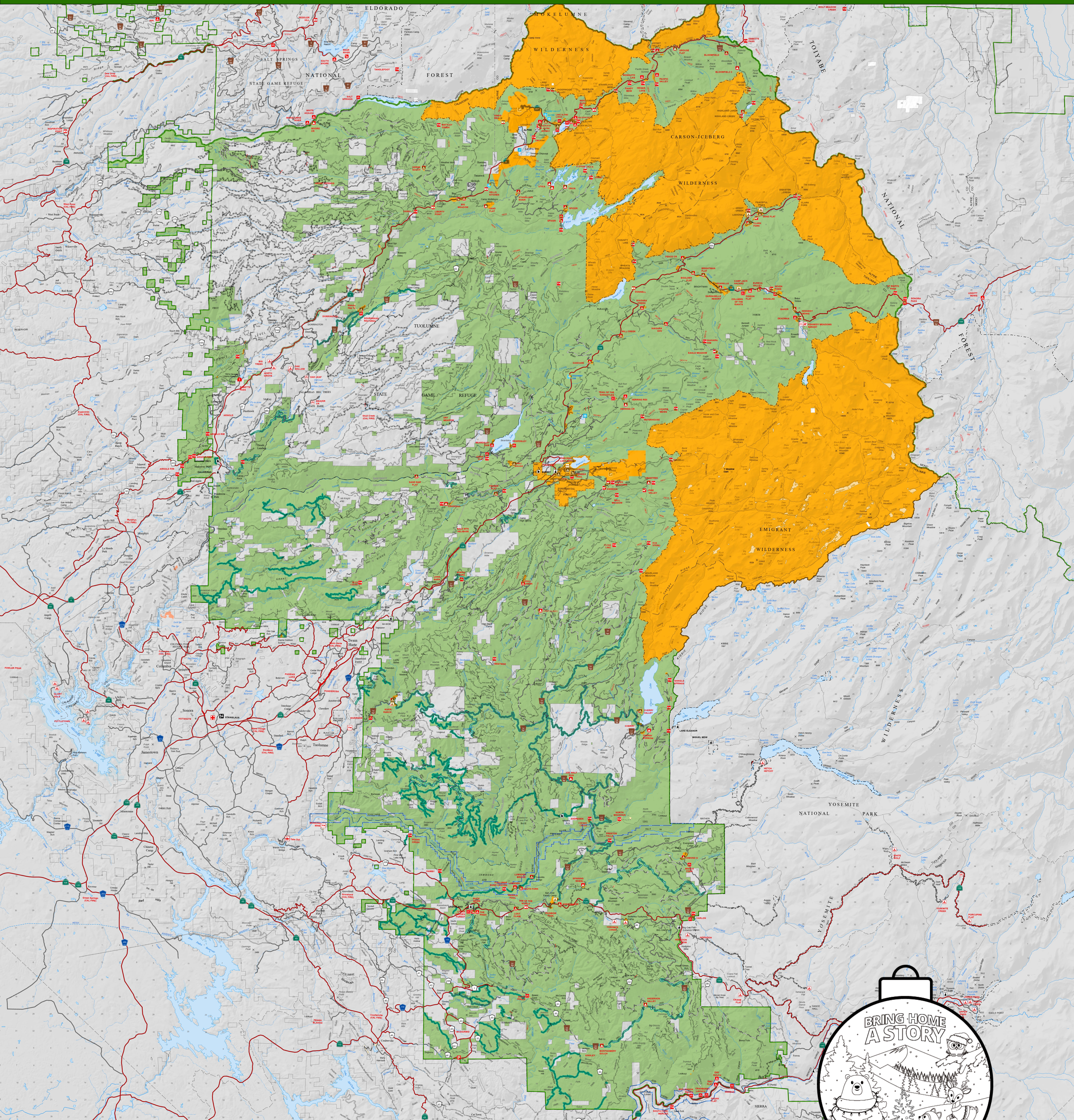




Christmas Tree Cutting

Stanislaus National Forest



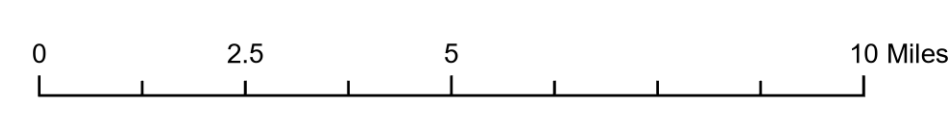
National Forest Land OPEN to Christmas Tree Cutting

National Forest Land CLOSED to Christmas Tree Cutting

Other Ownership CLOSED to Christmas Tree Cutting

NF Roads and Trails OPEN year round (All other NF routes CLOSED Dec 15 - Apr 14)

- PRIMARY HIGHWAY
 - SECONDARY HIGHWAY
 - ROAD, LIGHT DUTY, PAVED
 - ROAD, COMPOSITION UNKNOWN
 - ROAD, LIGHT DUTY, GRAVEL
 - ROAD, IMPROVED, DIRT
 - ROAD, UNIMPROVED, DIRT
 - 4WD ROUTE
 - TRAIL
 - XXXX CLOSED/ADMIN USE ONLY
- STATE HIGHWAY
 - COUNTY HIGHWAY
 - FOREST HIGHWAY
 - COUNTY ROUTE



- PARKING
- TRAILHEAD - OHV
- INTERPRETIVE TRAIL
- CAMPGROUND - F.S.
- GROUP CAMPGROUND - F.S.
- HORSE CAMP - F.S.
- CAMPSITE - FOREST SERVICE
- PICNIC AREA - FOREST SERVICE
- TRAILHEAD
- OBSERVATION SITE
- PACK STATION - F.S.
- RESORT - F.S.
- DOWNHILL SKI AREA
- WINTER RECREATION AREA

Christmas Tree Cutting Restrictions

1. Permits must be obtained by visiting Recreation.gov/tree-permits
2. Wheeled motorized vehicles may not be used off of authorized Forest Service roads or motorized trails to harvest Christmas trees
3. Consult the Forest Service Motor Vehicle Use Map (MVUM) for authorized motorized use of National Forest roads and trails and the Over Snow Vehicle Use Map (OSVUM) for authorized over snow motorized travel.