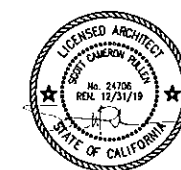


WILCO
750 MONO WAY
SONORA, CA. 95370

HMR ARCHITECTS
2130 21st Street
Sacramento CA 95818
T 916 736 2724
www.hmrarchitects.com



Wilco

TENANT IMPROVEMENT
WILCO FARM STORE
SONORA

750 MONO WAY
SONORA CA 95370

SUBMITTAL SET
12/20/2019
8:19-0122

REVISIONS

Table with 3 columns: NO., DESCRIPTION, DATE

COVER SHEET

NOVEMBER XX, 2019

19059

GENERAL NOTES

- 1. VERIFY AND COORDINATE SITE CONDITIONS AND DIMENSIONS. BRING INCONSISTENCIES TO ATTENTION OF ARCHITECT BEFORE PROCEEDING WITH WORK.
2. PROVIDE SHORING AND BRACING AS NECESSARY TO ENSURE STRUCTURAL INTEGRITY WHEN WORK INCLUDES STRUCTURAL MEMBERS.
3. IMMEDIATELY BRING ERRORS AND OMISSIONS FOUND IN THESE DRAWINGS TO ATTENTION OF ARCHITECT...

SEPARATE PERMITS/DEFERRED SUBMITTALS:

- 1. ALL RETAIL AND WAREHOUSE SHELVING FIXTURES, CLOTHING DISPLAYS AND STORAGE RACKS (AS SHOWN ON SHEET F001) WILL BE DESIGNED, PERMITTED AND INSTALLED SEPARATELY (BY TENANT)
2. ALL SIGNAGE TO BE DESIGNED, PERMITTED AND INSTALLED SEPARATELY (BY TENANT)
3. FIRE SPRINKLER AND FIRE ALARM MODIFICATIONS UNDER SEPARATE PERMIT (BIDDER DESIGNED AND PERMITTED)

GENERAL CONTRACTOR TO SUBMIT DEFERRED SUBMITTAL TO ARCHITECT OR RECORD FOR REVIEW. ALL ITEMS LISTED AS "BIDDER DESIGNED" ARE TO BE FULLY ENGINEERED AND STAMPED BY A CALIFORNIA LICENSED ENGINEER PRIOR TO SUBMITTING TO ARCHITECT AND CITY FOR PERMITS.

NOTICE TO BIDDING SUB-CONTRACTORS & SUPPLIERS:

ALL REQUESTS FOR INFORMATION AND SUBSTITUTION REQUESTS MUST BE SUBMITTED TO A GENERAL CONTRACTOR FOR REVIEW AND FORWARDED TO THE ARCHITECT AND OWNER FOR CONSIDERATION. THE ARCHITECT, ENGINEERS OR TENANT ARE NOT TO BE CONTACTED DIRECTLY.

NOTICE TO BIDDING GENERAL CONTRACTORS:

ALL REQUESTS FOR INFORMATION AND SUBSTITUTION REQUESTS MUST BE SUBMITTED ONLY TO THE ARCHITECT AND OWNER FOR CONSIDERATION. THE ENGINEERS AND TENANT ARE NOT TO BE CONTACTED DIRECTLY.

SYMBOLS LEGEND

Table mapping symbols to descriptions: ROOM NUMBER, WINDOW TYPE, DOOR NUMBER, GRID CENTER, EQUIPMENT NUMBER, PARTITION TYPE, KEYNOTE, APPLIANCE.

PROJECT SUMMARY

PROJECT SUMMARY:
WORK SCOPE: ALTERATION OF PRIOR HARDWARE STORE WITH GARDEN CENTER AND CUSTOMER LOADING INTO NEW WILCO FARM STORE WITH GARDEN CENTER AND LOADING (LOAD-OUT) WITH MINIMAL ASSOCIATED SITE WORK.
JURISDICTION: CITY OF SONORA, CALIFORNIA
ADDRESS: 750 MONO WAY, SONORA, CA 95370

GOVERNING CODES:
2016 CALIF. BUILDING STANDARDS ADMIN. CODE, CCR TITLE 24, PART 1
2016 CALIF. BUILDING CODE (VOLUME 1 & 2) (CBC), CCR TITLE 24, PART 2
2016 CALIF. ELECTRICAL CODE (CEC), CCR TITLE 24, PART 3
2016 CALIF. MECHANICAL CODE (CMC), CCR TITLE 24, PART 4
2016 CALIF. PLUMBING CODE (CPC), CCR TITLE 24, PART 5
2016 CALIF. ENERGY CODE, CCR TITLE 24, PART 6
2016 CALIF. FIRE CODE (CFC), CCR TITLE 24, PART 9

2016 CALIF. GREEN BUILDING STANDARDS, CCR TITLE 24, PART 11
2016 CALIF. REFERENCED STANDARDS, CCR TITLE 24, PART 12
2016 CALIF. PUBLIC SAFETY, STATE FIRE MARSHALL REGULATIONS, TITLE 19, CCR SONORA MUNICIPAL CODE (FMC)
CALIFORNIA RETAIL FOOD CODE (CALCODE) - FOOD PERMIT REQUIRED

SITE PARKING:

EXISTING TO REMAIN

SEE SHEET FLS01 FOR OCCUPANT LOAD CALCULATION
SEE SHEET FLS01 FOR PLUMBING FIXTURE CALCULATION
SEE SHEET FLS02 FOR EXITING PLAN

TUOLUMNE COUNTY ENV. HEALTH DEPT. REQUIREMENTS

THIS PROJECT IS CONSIDERED A NON-POTENTIALLY HAZARDOUS PRE-PACKAGED FOOD SALES RETAILER. TUOLUMNE COUNTY ENVIRONMENTAL HEALTH REQUIRES THAT WILCO OBTAIN AN ANNUAL FOOD RETAIL PERMIT. PLAN REVIEW IS REQUIRED.

ABBREVIATIONS LIST

Large table of abbreviations: D.S. DOWN SPOUT, N.B. NOSE BIBB, O.P. OPPOSITE, S. SQUARE, etc.

DIRECTORY

TENANT

WILCO
200 INDUSTRIAL WAY
MT. ANGELO, OREGON 97362
(503) 845-8129
CONTACT: JERAD LILLEGARD

ARCHITECT

HMR ARCHITECTS, INC.
2130 21st STREET
SACRAMENTO, CA 95818
(916) 736-2724 X17
CONTACT: CHRISTIAN CHITTENDEN, P.M.
EMAIL: christianc@hmrarchitects.com

MECHANICAL

ACIES ENGINEERING
3371 OLCOTT STREET
SANTRA CLARA, CA 95540
(408) 522-5225 X121
ATTN: CHRISTIAN DALMARTA

PLUMBING

ACIES ENGINEERING
3371 OLCOTT STREET
SANTRA CLARA, CA 95540
(408) 522-5225 X121
ATTN: CHRISTIAN DALMARTA

ELECTRICAL

ACIES ENGINEERING
3371 OLCOTT STREET
SANTRA CLARA, CA 95540
(408) 522-5225 X228
ATTN: THEMEDES MINOR

STRUCTURAL

VLMK ENGINEERING + DESIGN
3933 SW KELLY AVE.
PORTLAND, OR 97239
(503) 222-4453

PROPERTY OWNER

ARGONAUT INVESTMENTS, LLC
101 LARKSPUR LANDING CIRCLE, SUITE 120
LARKSPUR, CA 94939
(650) 793-1343
CONTACT: PETE LAMB
EMAIL: plamb@argonaut.com

RACKING VENDOR

LOZIER
6336 PERSHING DRIVE
OMAHA, NE 68110
(800) 228-9882

STOCK ROOM & WAREHOUSE/LOAD OUT

RAYMOND HANDLING CONCEPTS CORP.
1121 STRIKER AVE. SUITE 150
SACRAMENTO, CA 95834
(916) 928-1400

REGULATORY AGENCIES

BUILDING DIVISION

CITY OF SONORA
BUILDING DEPARTMENT
94 N. WASHINGTON STREET
SONORA, CA 95370
(209) 532-3508

FIRE DEPARTMENT

SONORA FIRE DEPARTMENT
201 S. SHEPHERD STREET
SONORA, CA 95370
(209) 532-7432

PLANNING DIVISION

CITY OF SONORA
PLANNING DEPARTMENT
94 N. WASHINGTON STREET
SONORA, CA 95370
(209) 532-3508

HEALTH DEPARTMENT

TUOLUMNE COUNTY ENVIRONMENTAL
48 YANEY AVENUE #4
SONORA, CA 95370
(209) 533-6440

SHEET INDEX

ARCHITECTURAL

- A000 COVER SHEET
A0.2a CAL GREEN CHECK LIST
A0.2b CAL GREEN CHECK LIST
A0.2c CAL GREEN CHECK LIST
A001 ACCESSIBILITY REQUIREMENTS
A002 ACCESSIBILITY REQUIREMENTS
A003 OWNER-FURNISHED CONTRACTOR-INSTALLED OFCI MATRIX FOR DESIGN AND CONSTRUCTION
A101 SITE PLAN
A102 SITE DETAILS
A103 ENLARGED SITE PLAN
FLS01 FIRE LIFE SAFETY - GENERAL NOTES
FLS02 FIRE LIFE SAFETY - EXITING PLAN
F01 FIXTURE PLAN
D101 DEMOLITION PLANS
D102 ENLARGED DEMO PLANS
D103 ENLARGED DEMO PLANS
A201 FLOOR PLAN
A202 ENLARGED FLOOR PLANS
A202.1 ENLARGED FLOOR PLANS
A203 FINISH FLOOR PLAN
A204 CEILING PLAN
A204.1 ENLARGED CEILING PLAN
A204.2 ENLARGED CEILING PLAN
A205 ROOF PLAN
A301 EXTERIOR ELEVATIONS
A401 SECTIONS
A402 SECTIONS
A501 DETAILS
A502 DETAILS
A601 DOOR SCHEDULE
A602 WINDOW SCHEDULE
A701 INTERIOR ELEVATIONS
A702 INTERIOR ELEVATIONS
A703 INTERIOR ELEVATIONS
A704 INTERIOR ELEVATIONS
A705 INTERIOR ELEVATIONS
A706 INTERIOR ELEVATIONS
A801 ROOM FINISH, MATERIAL & EQUIPMENT SCHEDULE

MECHANICAL CONT.

- MO.10 MECHANICAL COMPLIANCE
MO.11 MECHANICAL COMPLIANCE
MO.12 MECHANICAL COMPLIANCE
M2.1A PARTIAL MECHANICAL FLOOR PLAN
M2.1B PARTIAL MECHANICAL FLOOR PLAN
M2.1C PARTIAL MECHANICAL FLOOR PLAN
M2.1D PARTIAL MECHANICAL FLOOR PLAN
M3.1A PARTIAL MECHANICAL ROOF PLAN
M3.1B PARTIAL MECHANICAL ROOF PLAN
M3.1C PARTIAL MECHANICAL ROOF PLAN
M3.1D PARTIAL MECHANICAL ROOF PLAN
M6.1 MECHANICAL DETAILS

ELECTRICAL

- E0.0 INDEX, LEGEND, ABBREVIATIONS, CALGREEN, DEMO NOTES, GENERAL NOTES
E0.1 ELECTRICAL LIGHTING FIXTURE SCHEDULE
E0.3 SPECIFICATIONS
E1.0 ELECTRICAL OVERALL PLAN
E2.0A ELECTRICAL PARTIAL LIGHTING PLAN
E2.0B ELECTRICAL PARTIAL LIGHTING PLAN
E2.0C ELECTRICAL PARTIAL LIGHTING PLANS
E3.0A ELECTRICAL PARTIAL POWER PLAN
E3.0B EXTERIOR ELECTRICAL PARTIAL POWER PLAN
E3.0C ELECTRICAL PARTIAL POWER PLANS
E3.0D ELECTRICAL PARTIAL POWER PLANS
E3.1A ELECTRICAL PARTIAL ROOF POWER PLAN
E3.1B ELECTRICAL PARTIAL ROOF POWER PLAN
E3.1C ELECTRICAL PARTIAL ROOF POWER PLAN
E3.1D ELECTRICAL PARTIAL ROOF POWER PLAN
E4.0 ELECTRICAL PANEL SCHEDULES
E4.1 ELECTRICAL PANEL SCHEDULES
E5.0 ELECTRICAL SINGLE-LINE DIAGRAM
E9.0 ELECTRICAL TITLE 24 FORMS
E9.1 ELECTRICAL TITLE 24 FORMS
E9.2 ELECTRICAL TITLE 24 FORMS
E9.3 ELECTRICAL TITLE 24 FORMS
E9.4 ELECTRICAL TITLE 24 FORMS

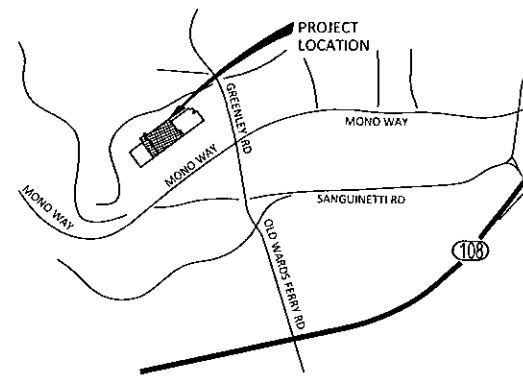
MECHANICAL

- M0.1 MECHANICAL LEGEND, NOTES AND ABBREVIATIONS
M0.2 MECHANICAL SCHEDULES
M0.3 MECHANICAL SCHEDULES
M0.4 MECHANICAL SPECIFICATIONS
M0.5 MECHANICAL SPECIFICATIONS
M0.6 MECHANICAL COMPLIANCE
M0.7 MECHANICAL COMPLIANCE
M0.8 MECHANICAL COMPLIANCE
M0.9 MECHANICAL COMPLIANCE

PLUMBING

- P0.1 PLUMBING GENERAL NOTES AND FIXTURE SCHEDULE
P0.2 PLUMBING CALCULATIONS
P0.3 PLUMBING SPECIFICATIONS
P0.4 PLUMBING TITLE 24 FORMS
P1.0 PLUMBING SITE PLAN
P2.0 PLUMBING SANITARY SEWER AND VENT FLOOR PLAN
P2.1 PLUMBING DOMESTIC WATER FLOOR PLAN
P4.0 PLUMBING DETAILS

VICINITY MAP



12/23/2019 9:37 AM CHRISTIAN CHITTENDEN - SONORA 01\_SONORA\_A000-COVER.dwg

PCI XL error

Subsystem: xlpaint

Error: Input Stream EOF

Operator: BezierRelPath

Position: 1065755



**GENERAL NOTES:**

1. ALL ACCESSIBLE PARKING, PATHS OF TRAVEL, TACTILE WARNING MATS, SIGNAGE, ETC. ARE EXISTING AS PART OF THE OVERALL CENTER. THEY ARE PROVIDED BY THE LANDLORD. WILCO WILL FIELD VERIFY AND PROVIDE MISSING ELEMENTS AS REQUIRED FOR THE PARKING AND PATH OF TRAVEL IN THEIR IMMEDIATE VICINITY (SHOWN ON THIS ENLARGED PLAN).
2. ALL EXTERIOR ACCESSIBILITY FEATURES ARE IN FULL COMPLIANCE WITH THE 2016 CBC AND WILL BE SUBJECT TO VERIFICATION.

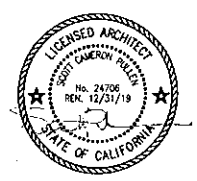
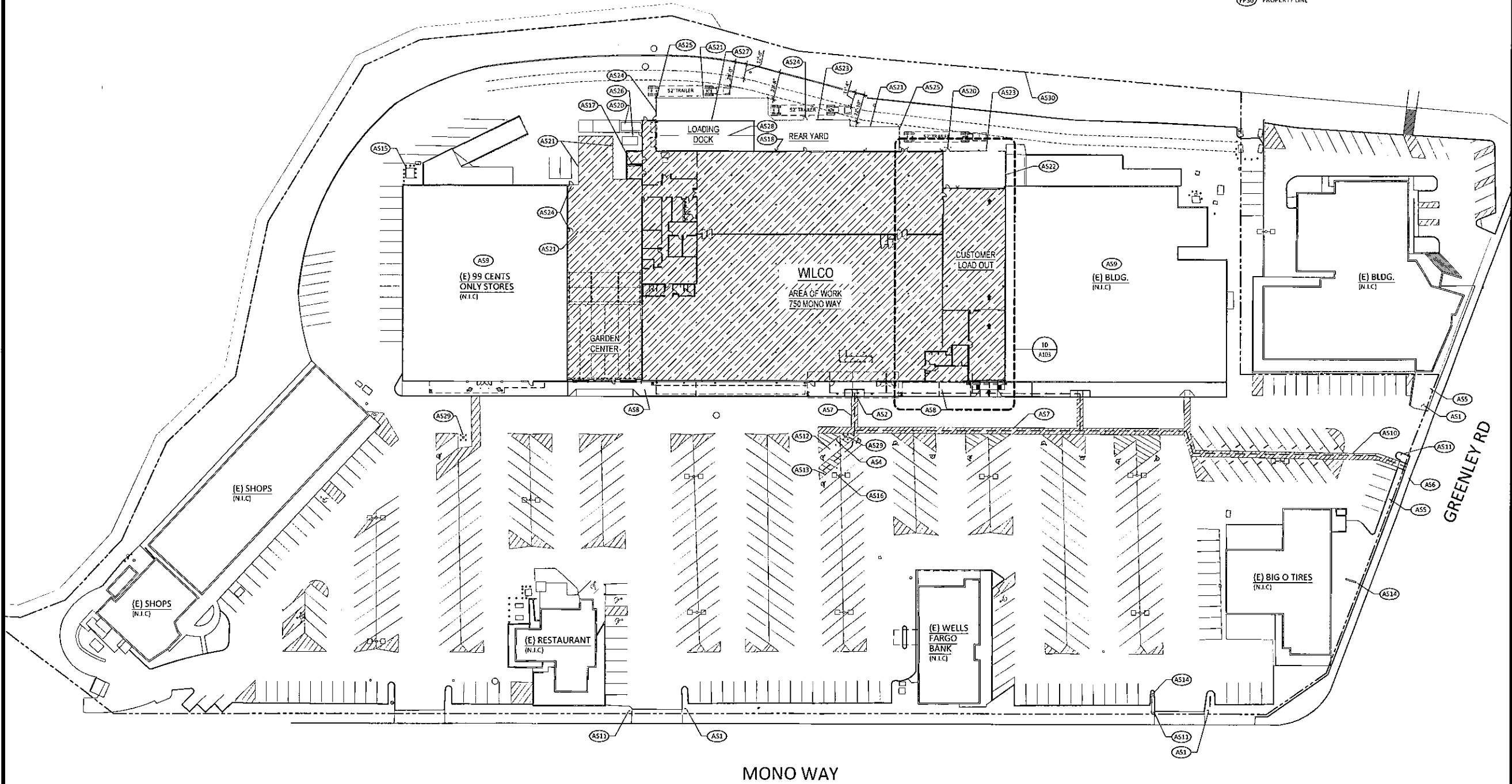
**LEGEND:**

- GENERAL CONTRACTOR'S AREA OF WORK
- EXISTING ACCESSIBLE PATH OF TRAVEL CBC 11B-206 & 402

**KEYNOTES:**

- AS1 EXISTING SITE SIGN AT ENTRANCE FOR UNAUTHORIZED VEHICLES IN ACCESSIBLE SPACES.
- AS2 EXISTING CURB RAMP WITH TACTILE WARNING MAT, FULL WIDTH OF RAMP AND 36" IN THE DIRECTION OF TRAVEL.
- AS3 EXISTING CENTER PARKING TO REMAIN
- AS4 EXISTING ACCESSIBLE PARKING SIGN
- AS5 EXISTING LANDSCAPE AND PLANTERS
- AS6 EXISTING PUBLIC SIDEWALK
- AS7 EXISTING PATH OF TRAVEL WITH 2% MAX. CROSS SLOPE, MAX 5% SLOPE IN DIRECTION OF TRAVEL.
- AS8 EXISTING WALK, MAX 2% CROSS SLOPE, MAX 5% SLOPE IN DIRECTION OF TRAVEL.
- AS9 EXISTING ADJACENT BUILDINGS, NOT A PART
- AS10 EXISTING ACCESSIBLE SITE PATH OF TRAVEL FROM PUBLIC RIGHT-OF-WAY TO WILCO ENTRANCE
- AS11 EXISTING 5'0" SIGN
- AS12 EXISTING VAN ACCESSIBLE PARKING TO REMAIN
- AS13 EXISTING ACCESSIBLE PARKING TO REMAIN
- AS14 EXISTING MONUMENT SIGN
- AS15 EXISTING PAD MOUNTED TRANSFORMER. SEE ELECTRICAL DRAWINGS.
- AS16 EXISTING PARKING LOT LIGHTS TO REMAIN, TYP.
- AS17 EXISTING ELECTRICAL MAIN SWITCHGEAR. SEE ELECTRICAL DRAWINGS.
- AS18 EXISTING GAS RISER. SEE PLUMBING DWGS. VERIFY

- AS19 EXISTING BACK-UP GENERATOR. SEE ELECTRICAL DWGS.
- AS20 (E) EMERGENCY MAN GATE W/ PANIC DOOR HARDWARE TO REMAIN.
- AS21 (N) 30' CHAIN LINK BLACK FENCE W/ VERT. VINYL SLATS, BY FENCE VENDOR. UNDER SEPARATE APPROVAL.
- AS22 (E) 12' CHAIN LINK BLACK FENCE TO REMAIN. REPLACE VERT. VINYL SLATS AS REQUIRED, TYP.
- AS23 (N) CHAIN LINK BLACK VEHICULAR ROLLING GATE W/ VERTICAL VINYL SLATS, BY FENCE VENDOR. UNDER SEPARATE APPROVAL.
- AS24 (N) EMERGENCY 3'X7' MAN GATE W/ PANIC DOOR HARDWARE, BY FENCE VENDOR. UNDER SEPARATE APPROVAL.
- FP25 (N) 6" DIA. CONCRETE FILLED SAFETY BOLLARD, TYP. (COLOR: YELLOW)
- FP26 EXISTING COMPACTOR
- FP27 EXISTING RAILING TO REMAIN.
- FP28 EXISTING LOADING DOCK RAMP
- FP29 EXISTING FIRE HYDRANT, TYP.
- FP30 PROPERTY LINE



TENANT IMPROVEMENT  
**WILCO FARM STORE SONORA**

750 MONO WAY  
 SONORA CA 95370

SUBMITTAL SET  
 12/20/2019  
 B19-0122

REVISIONS

NO.	DESCRIPTION	DATE

ALL DRAWINGS AND WRITTEN MATERIAL APPEARING HEREIN CONSTITUTE ORIGINAL & UNPUBLISHED WORK OF HMR ARCHITECTS AND MAY NOT BE DUPLICATED, USED OR DISCLOSED WITHOUT WRITTEN CONSENT OF HMR ARCHITECTS

REFERENCE SITE PLAN

NOVEMBER XX, 2019

SCALE: 1"=40'-0"  
 DRAWN BY: RL  
 CHECKED BY: SP  
 DATE: 12/20/19  
**A101**

12/20/2019 3:16 PM LEOR E:\WILCO\19059 - SONORA\SSON-A101 REFERENCE SITE PLAN.DWG

10 REFERENCE SITE PLAN



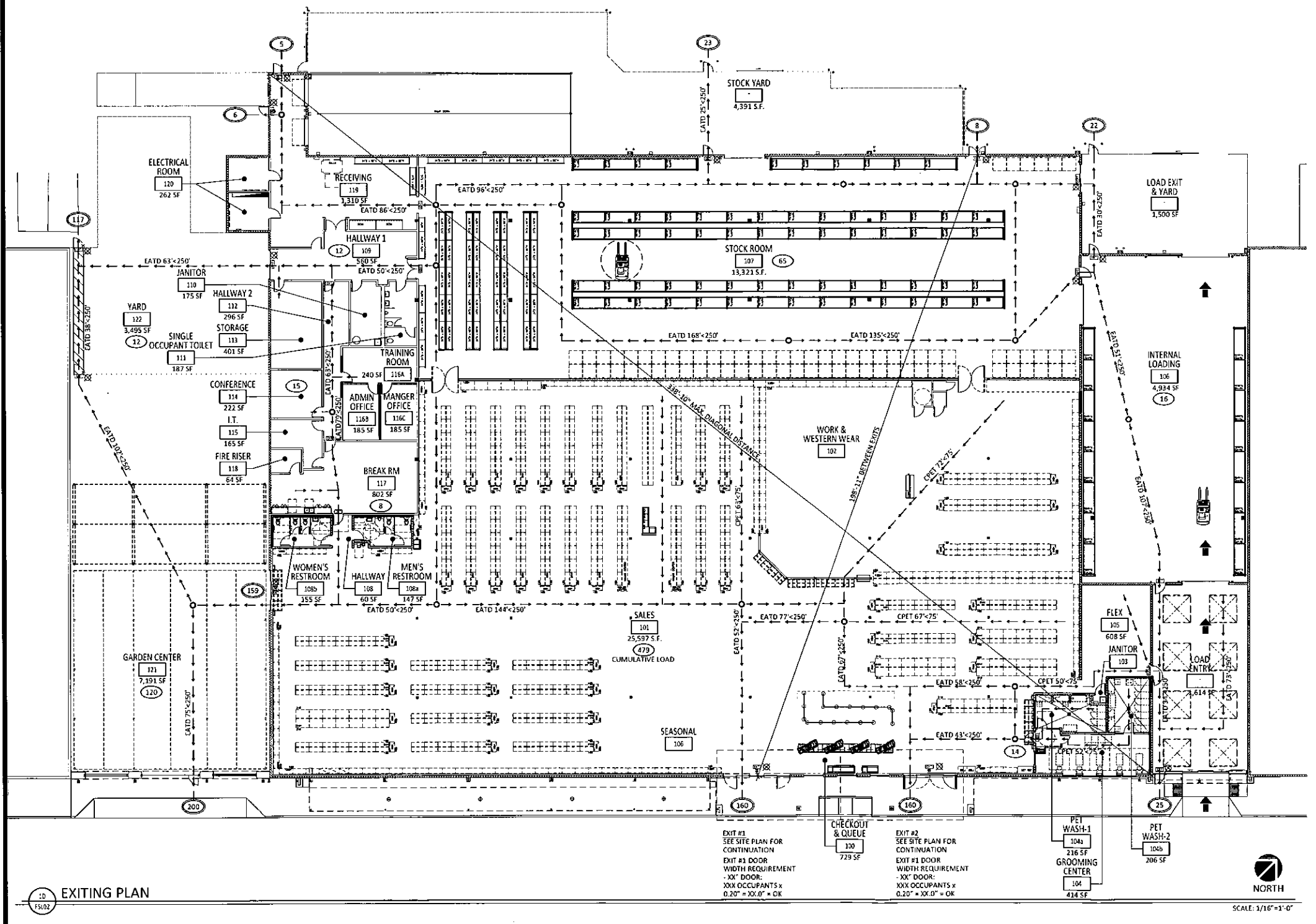
SCALE: 1"=40'-0"

SYMBOL LEGEND	
☒	TACTILE EXIT SIGNAGE
EXIT	ILLUMINATED EXIT SIGN
○	2 CHOICES FROM CPET
→	PATH OF EGRESS TRAVEL
---	OUTLINE OF FIXTURES / CASES / PALLETS

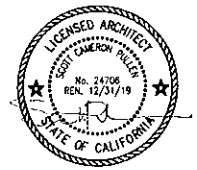
**NOTE:**  
 G.C. SHALL PROVIDE ADDITIONAL ILLUMINATED EXIT SIGNAGE (DIRECTIONAL) AS REQUIRED IN SALES AREA SO THAT ANY LOCATION AT +5'-0" A.F.F. IN SALES HAS VISIBILITY OF AT LEAST ONE EXIT SIGN

EXITING REQUIREMENTS					
EXITING ANALYSIS	MAIN SALES	STOCK	GARDEN CENTER	YARD	LOAD OUT
OCCUPANT LOAD	463	44	120	12	16
CUMULATIVE OCCUPANT LOAD	479	65	279	151	47
EXITS REQUIRED	2	2	2	2	1
EXITS PROVIDED	4	7	2	2	2
REQUIRED WIDTH PER OCCUPANT	0.2	0.2	0.2	0.2	0.2
TOTAL REQUIRED WIDTH (INCHES)	95.8	13	55.8	30.2	9.4
TOTAL WIDTH PROVIDED (INCHES)	456	252	72	36	144

**NOTES:**  
 1. CPET = COMMON PATH OF EGRESS TRAVEL  
 2. EATD = EXIT ACCESS TRAVEL DISTANCE



**HMR ARCHITECTS**  
 2130 21st Street  
 Sacramento CA 95818  
 916.736.2724  
 www.hmrarchitects.com



**Wilco**

TENANT IMPROVEMENT

**WILCO FARM STORE SONORA**

750 MONO WAY  
 SONORA CA 95370

SUBMITTAL SET  
 12/20/2019  
 B19-0122

REVISIONS		
NO.	DESCRIPTION	DATE

ALL DRAWINGS AND WRITTEN MATERIAL APPEARING HEREIN CONSTITUTE ORIGINAL & UNPUBLISHED WORK OF HMR ARCHITECTS AND MAY NOT BE DUPLICATED, USED OR DISCLOSED WITHOUT WRITTEN CONSENT OF HMR ARCHITECTS

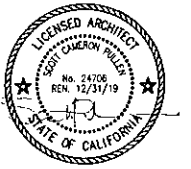
EXITING PLAN

NOVEMBER XX, 2019

Drawn By: RL  
 Checked By: SP  
 Job No.: 19059

**FLS02**

12/20/2019 3:17 PM ERICDAE E:\WILCO\SONORA\SONORA\_FLS01-FLS02\_FIRE LIFE SAFETY PLAN.DWG



TENANT IMPROVEMENT

WILCO FARM STORE  
SONORA

750 MONO WAY  
SONORA CA 95370

SUBMITTAL SET  
12/20/2019  
B19-0122

REVISIONS

NO.	DESCRIPTION	DATE

ALL DRAWINGS AND WRITTEN MATERIAL APPEARING  
HEREIN CONSTITUTE ORIGINAL & UNPUBLISHED  
WORK OF HMR ARCHITECTS AND MAY NOT BE  
DUPLICATED, USED OR DISCLOSED WITHOUT  
WRITTEN CONSENT OF HMR ARCHITECTS

EXTERIOR ELEVATIONS

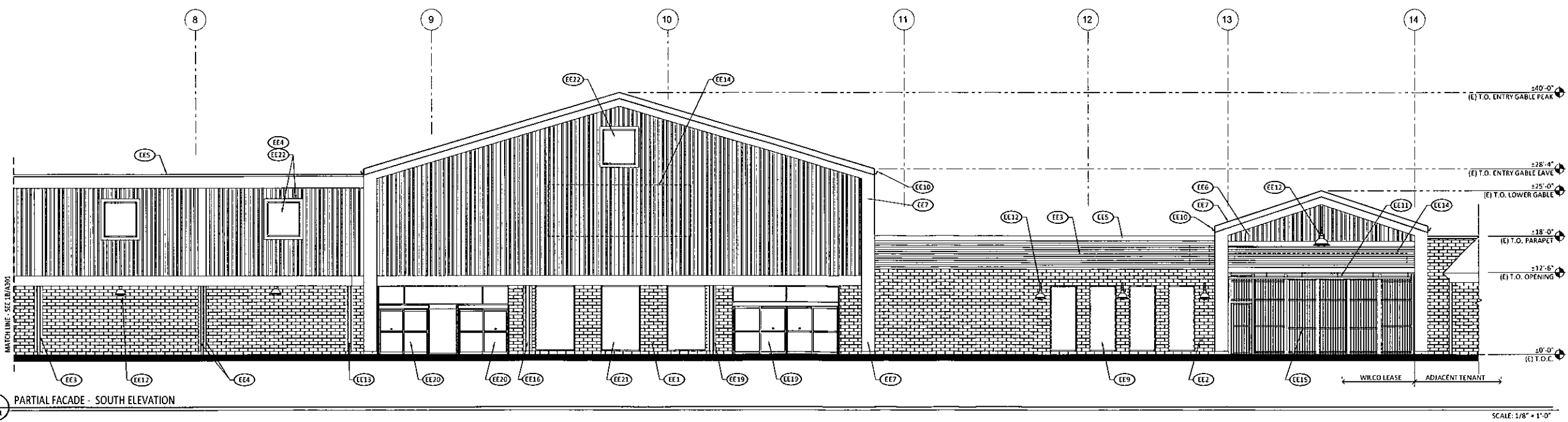
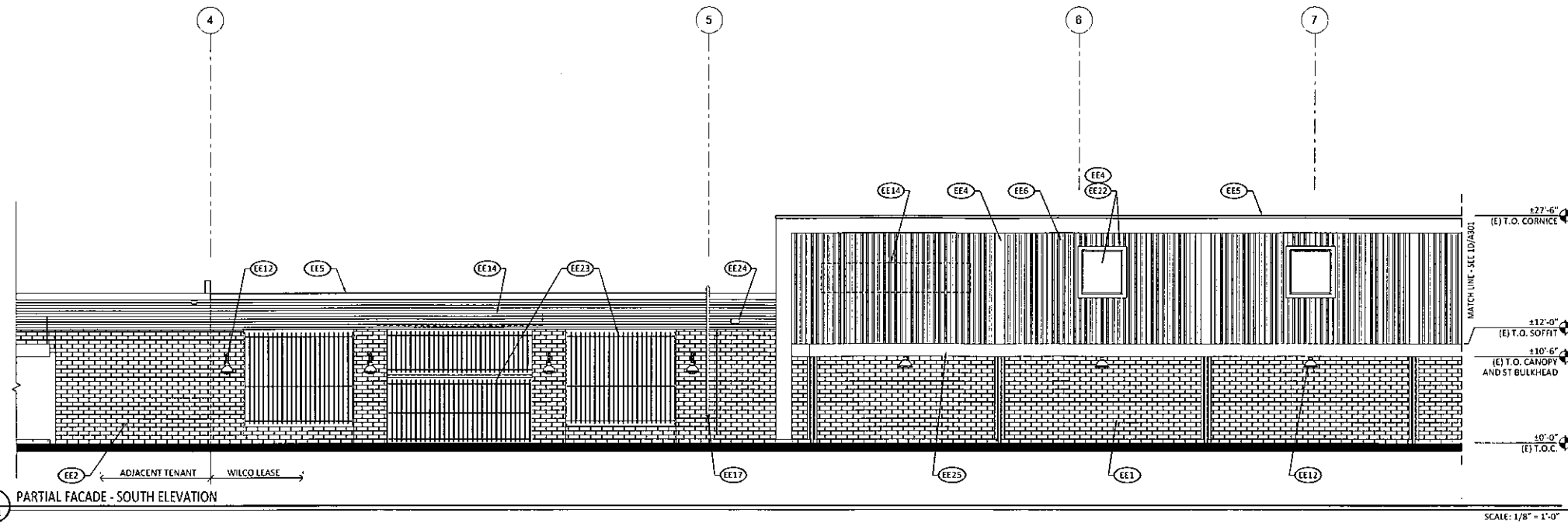
NOVEMBER XX, 2019

DRAWN BY:  
RL  
CHECKED BY:  
SP  
JOB NO:  
19059

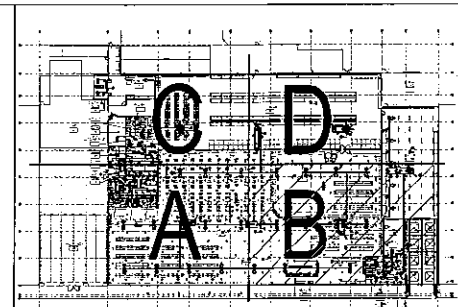
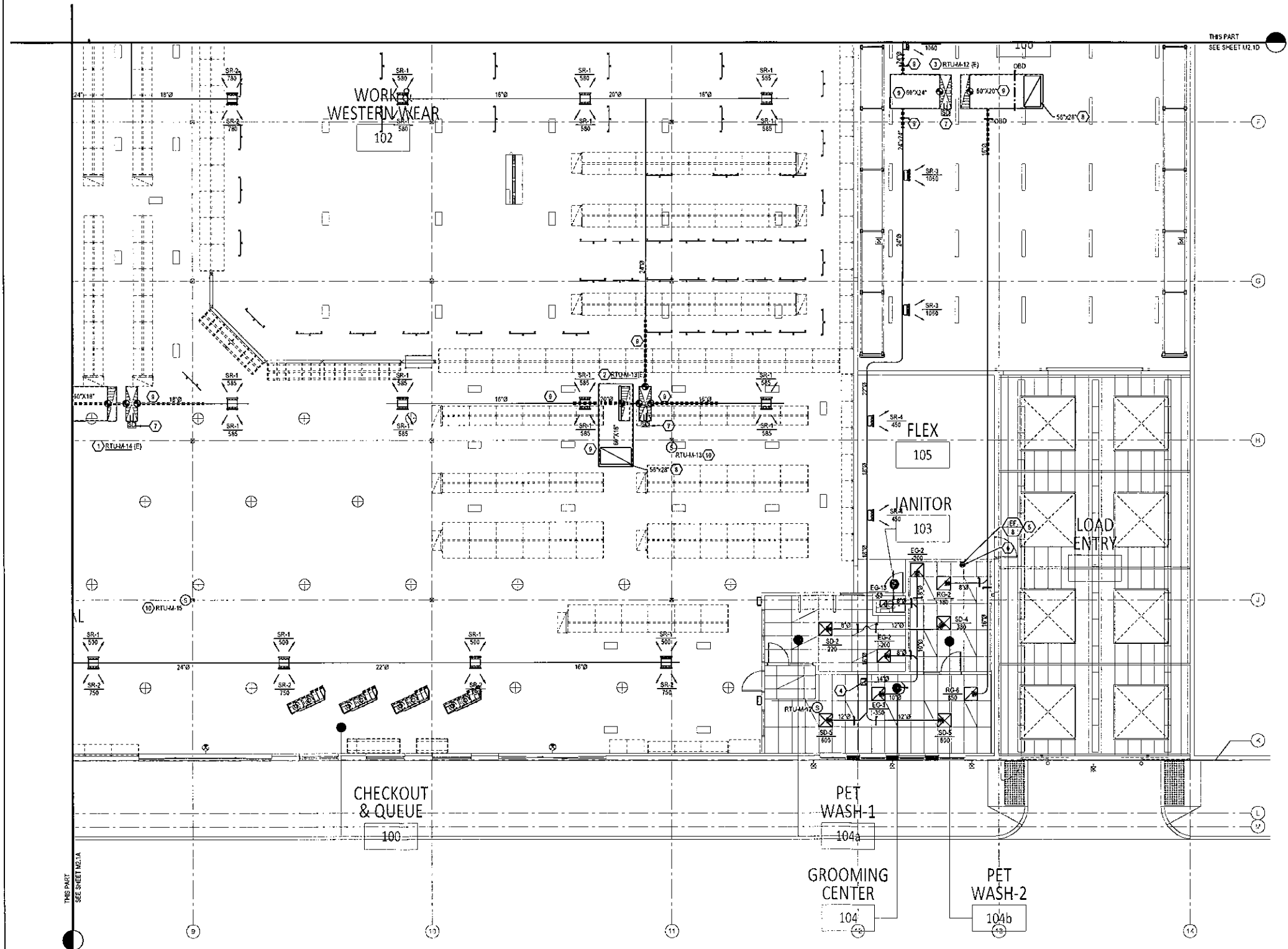
A301

KEYNOTES:

- EE1 EXISTING CONCRETE BLOCK WALL, PAINT PER FINISH SCHEDULE
- EE2 EXISTING HOSE BIB, PROTECT SUPPLY PIPING DURING CONSTRUCTION
- EE3 (E) FIBER CEMENT LAP SIDING, TYP.
- EE4 (E) FIBER CEMENT TRIM, TYP.
- EE5 (E) METAL PARAPET CAP, TYP.
- EE6 (E) FIBER CEMENT BOARD AND BATTEN CLADDING, TYP.
- EE7 (E) METAL PANEL CLADDING, TYP.
- EE8 (E) METAL STANDING SEAM ROOF, TYP.
- EE9 (E) STOREFRONT WINDOW, COORDINATE WITH STRUCTURAL, MATCH EXISTING
- EE10 METAL GUTTER, COORDINATE LOCATION OF DOWNSPOUT AND SPLASH BLOCK AT EXISTING ROOF
- EE11 (E) OVERHEAD CLEARANCE BAR WITH CLEARANCE AT 11'-6"
- EE12 (E) LIGHT FIXTURE
- EE13 (E) CANOPY SUPPORT STEEL COLUMN
- EE14 SIGNAGE BY TENANT, GC TO PROVIDE BLOCKING AND POWER AS REQUIRED
- EE15 (E) METAL FENCE WITH MAIN DOOR AND SLIDING GATE, TYP.
- EE16 (E) FIBER CEMENT PANEL SIDING, TYP.
- EE17 RELOCATED FD HOCK-UP, COORDINATE LINE AND SPRINKLER SYSTEM UNDER SEPARATE PERMIT
- EE18 (E) DOWNSPOUT AND SPLASH BLOCK
- EE19 (E) AUTOMATIC ENTRY DOOR
- EE20 (E) AUTOMATIC EXIT DOOR
- EE21 (E) STOREFRONT
- EE22 (E) FAUX WINDOW WITH FIBER CEMENT TRIM, TYP.
- EE23 (E) METAL FENCE AND GATE, TYP.
- EE24 (E) OVERFLOW SCUPPER
- EE25 (E) STEEL CANOPY



12/20/2019 3:19 PM LEOR  
E:\WILCO\19059\_SONORA\19059\_A301-A302\_EXT\_ELEVATIONS.DWG



**DEMOLITION NOTES**

- DEMOLISH ALL UNUSED MECHANICAL EQUIPMENT INCLUDING THERMOSTATS, DUCTWORK, AND/OR ANY ASSOCIATED ITEMS THAT DON'T FUNCTION.

**GENERAL NOTES**

- MECHANICAL CONTRACTOR IS RESPONSIBLE FOR SITE INVESTIGATION PRIOR TO COMMENCEMENT OF WORK, AND SHALL INFORM ARCHITECT OF ANY DISCREPANCY.
- COORDINATE DUCT ROUTING WITH EXISTING PIPING, CONDUITS AND STRUCTURAL MEMBERS, OFFSET AS REQUIRED.
- MECHANICAL CONTRACTOR MUST VERIFY ALL CLEARANCES AND DIMENSIONS IN FIELD.
- PROVIDE 1" ACoustICAL DUCT LINER IN SUPPLY AND RETURN AIR PLENUM FOR MIN. 10'-0" FROM UNITS.
- INSTALL MATERIAL VOLUME DAMPERS AT ALL BRANCH DUCT CONNECTIONS TO OUTLETS.
- EXHAUST OUTLET TO BE MIN. 10 FEET AWAY FROM ALL BUILDING OPENINGS & OUTSIDE AIR INTAKE.
- MECHANICAL CONTRACTOR TO SUBSTITUTE ROUND DUCT TO RECTANGULAR DUCT WITH THE SAME PRESSURE DROP TO ACCOMMODATE SPACING CONFLICT IN THE FIELD, IF ANY.

**KEY NOTES (X)**

- EXISTING 60"x20" SA & 60"x15" RA DUCTS UTR TO (E) RTU-M-14.
- EXISTING 60"x20" SA & 60"x15" RA DUCTS UTR TO (E) RTU-M-13.
- EXISTING 60"x20" SA & 60"x15" RA DUCTS UTR TO (E) RTU-M-12.
- 12"x12" EA DUCT UTR TO EF-1.
- WALL MOUNTED DRYER BOOSTER MOUNTED ABOVE CEILING. PROVIDE ACCESS FOR MAINTENANCE.
- 4" DRYER VENT UTR. PROVIDE LINT TRAP W/ CLEANOUT, FANTECH MODEL DBLT4W, MOUNTED AT 48" AFF.
- EXISTING DUCT SMOKE DETECTOR ON SUPPLY AIR DUCT TO REMAIN V.I.F. PROVIDE NEW IF NONE IS EXISTING TO SHUT DOWN UNIT WHEN TRIGGERED.
- RA OPENINGS ABOVE RA PLENUM. TERMINATE WITH 1/2" WIRE MESH INSECT SCREEN.
- FULL SIZE INTERNALLY INSULATED SUPPLY/RETURN AIR DUCTS.
- REMOTE TEMPERATURE SENSOR (MOUNTED AT 48" AFF. LOCATE THERMOSTAT INSIDE IT CLOSET.

**HMRARCHITECTS**  
 2130 21st Street  
 Sacramento, CA 95818  
 T 916 736 2724  
 www.hmrarchitects.com



**ACIES ENGINEERING**  
 3371 Ocotillo Street  
 Santa Clara, CA 95054  
 ph: (408) 522-6255  
 fx: (408) 522-6260  
 info@acies.net  
 Copyright © 2019

**Wilco**

TENANT IMPROVEMENT

**WILCO FARM STORE SONORA**

750 MONO WAY  
 SONORA CA 95370

**SUBMITTAL SET**  
 12/20/2019  
 B19-0122

**REVISIONS**

NO.	DESCRIPTION	DATE

ALL DRAWINGS AND WRITTEN MATERIAL APPEARING HEREIN CONSTITUTE ORIGINAL & UNPUBLISHED WORK OF HMR ARCHITECTS AND SHALL NOT BE DUPLICATED, USED OR DISCLOSED WITHOUT WRITTEN CONSENT OF HMR ARCHITECTS

PARTIAL MECHANICAL FLOOR PLAN

DECEMBER 20, 2019

DRAWN BY:  
 CHECKED BY:  
 JOB NO. 190843

**M2.1B**