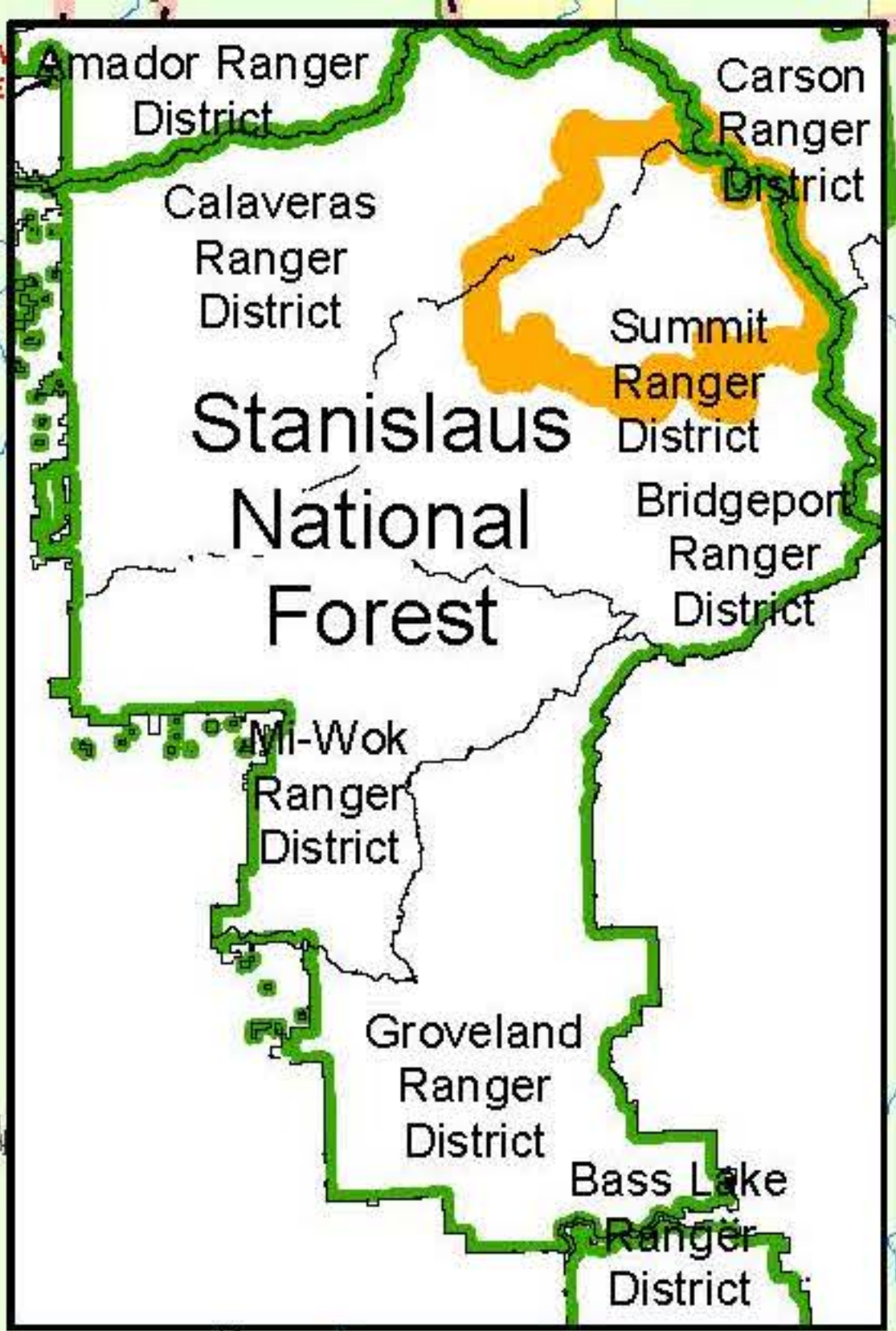
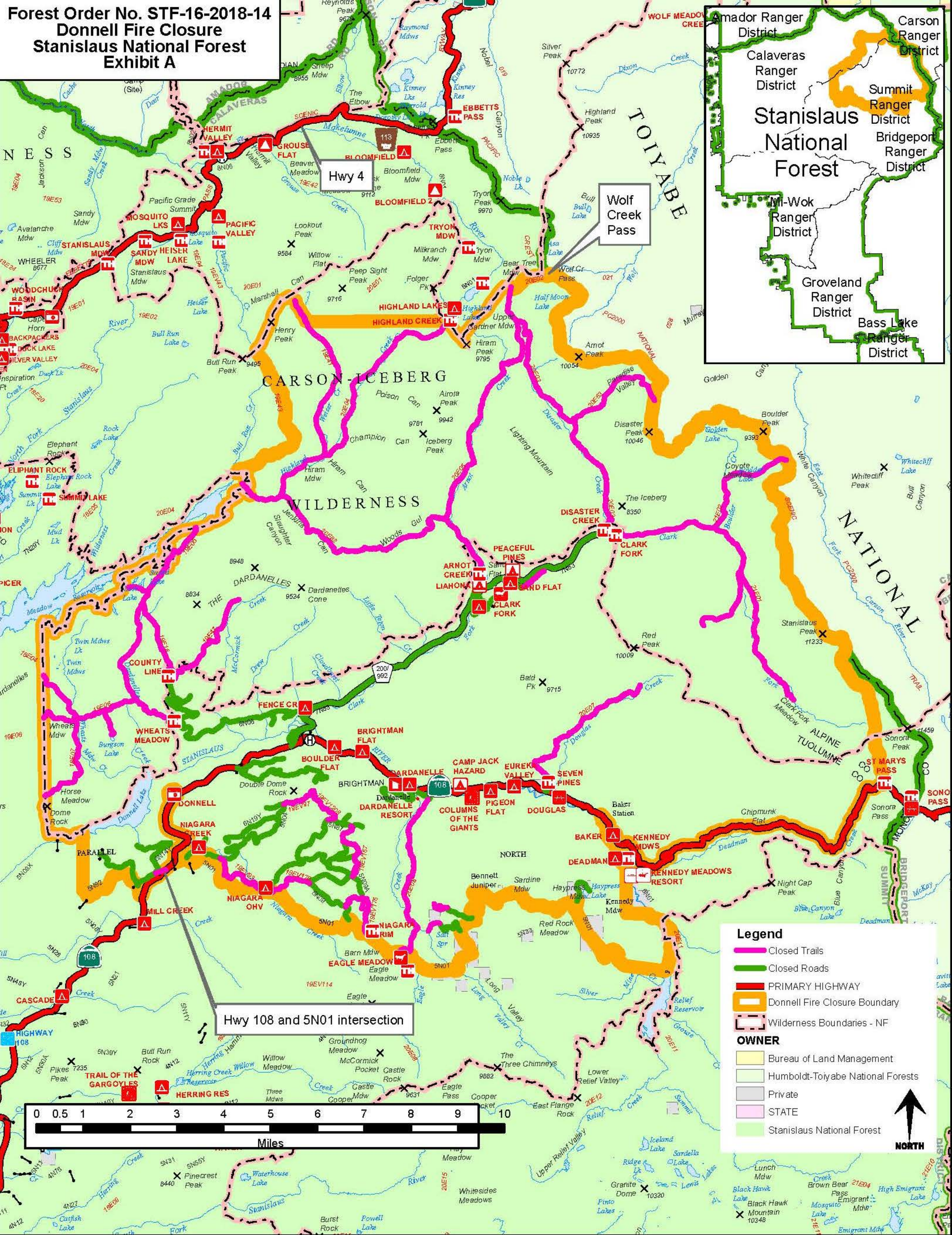


**Forest Order No. STF-16-2018-14  
Donnell Fire Closure  
Stanislaus National Forest  
Exhibit A**



Hwy 4

Wolf Creek Pass

Hwy 108 and 5N01 intersection

**Legend**

- Closed Trails
- Closed Roads
- PRIMARY HIGHWAY
- Donnell Fire Closure Boundary
- Wilderness Boundaries - NF

**OWNER**

- Bureau of Land Management
- Humboldt-Toiyabe National Forests
- Private
- STATE
- Stanislaus National Forest

